



Real-Time PCR System

RAPiCycler 96



Tailored for High-End
Laboratory Needs

Advanced Real-Time PCR System

RAPiCycler 96

The RapiCycler 96 from Genes2Me is a next-generation real-time PCR instrument designed for high-performance molecular diagnostics and research. With its unique side-scan detection technology, rapid thermal cycling, and intuitive software, RapiCycler-96 delivers precision, reliability, and speed—all within a compact, user-friendly design.



Designed for Precision. Built for Confidence

With 4 or 6 fluorescence channels, RapiCycler 96 can process up to 96 samples in one run

Key Features

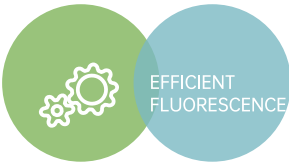
- **Unique Side Scan Technology** – Detects all fluorescent channels simultaneously, scanning 96 wells within just 5 seconds.
- **Ultra-Fast Ramp Rate** – Up to 8°C/s, enabling faster run times without compromising accuracy.
- **Temperature Gradient Function** – 12-column gradient with 0.1°C–42°C adjustable range for optimized assay conditions.
- **Large 12.1" LCD Touchscreen** – Real-time monitoring, intuitive control, and full offline operation.
- **Automated Reporting** - Automated report generation with positive and negative results at the end of the run for easier and faster reporting.
- **Built-in Audit Trail System** – Hierarchical access and full traceability for regulatory compliance.
- **Automatic Hot Lid** – Compatible with automated workstations for high-throughput workflows.
- **Energy-Efficient LED Light Source** – Long service life, low maintenance, and environmentally friendly.
- **CE-IVD Certified** – Validated for clinical diagnostic use.

Intelligence at your Fingertips

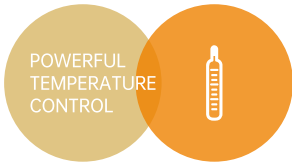


- Capable of various data analyses to meet the needs of most experiments, including qualitative analysis, SNP genotyping, absolute quantitative analysis, relative quantitative analysis, genotyping, endpoint fluorescence analysis, melting curve analysis, pathogen detection, plus/minus assays etc.
- Software complied with security access, auditing and e-signature
- Automated result interpretation & analysis report.

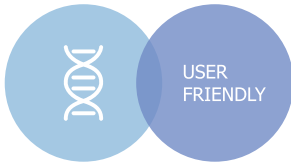
POWERFUL SOFTWARE



- The 4 or 6 fluorescence channels compatible with most of the common fluorescent dyes and probes of regular detection reagents.
- Strong fluorescence signal, low background noise and high sensitivity.
- All channels are detected synchronously, and all fluorescent channels of 96 samples are detected within 5s.
- Designed with LED light source, energy saving, environmental protection, long service life, and maintenance-free.



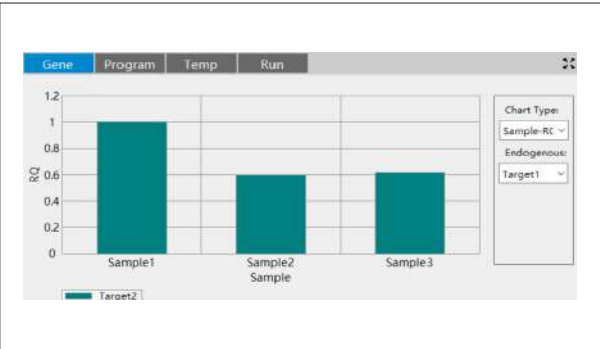
- The maximum heating ramp rate is 8°C/s for quicker completion of assay.
- With the temperature accuracy of $\pm 0.1^{\circ}\text{C}$ and uniformity of $\pm 0.2^{\circ}\text{C}$ to ensure accurate results.
- With over-current, over-temperature, power-down data self-recovery and other protection functions to ensure the safe operation of the experiment.



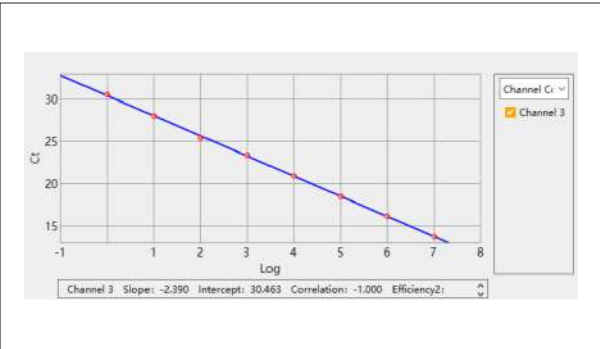
- Touch screen / PC operation, one computer can control multiple instruments, and can run multiple groups of experiments at any time
- Automatic hot lid, which can be used with automated workstation to improve efficiency of high throughput labs
- Wireless LAN connectivity allows a PC to remotely control the instrument receive data and perform analysis.

Ordering Information

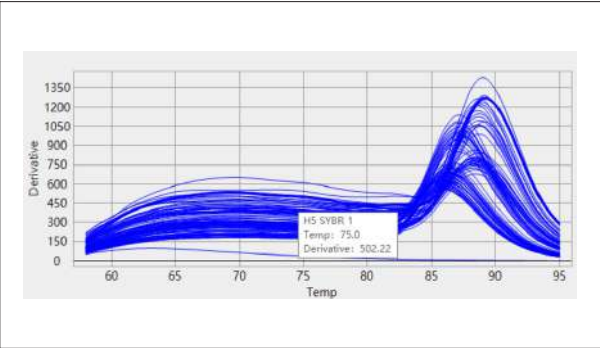
CAT #	Description
G2MRAPI4001	RapiCycler 96 Real Time PCR System (4 channel)
G2MRAPI4002	RapiCycler 96 Real Time PCR System (6 channel)



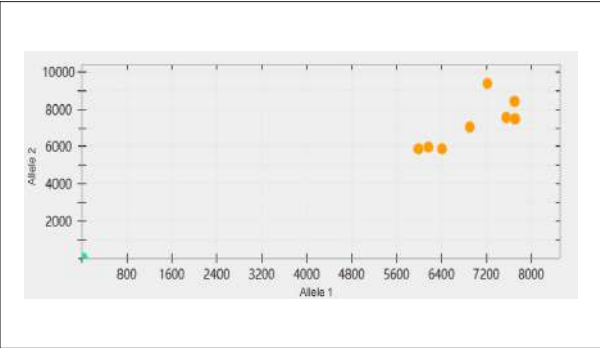
Bar Chart – Relative Quantification Analysis
Relative gene expression analysis across multiple samples using $\Delta\Delta\text{Ct}$ method.



Standard Curve
Standard curve demonstrating high amplification efficiency and linear quantification



Melting Curve
Melting curve confirming specificity of PCR products through peak analysis

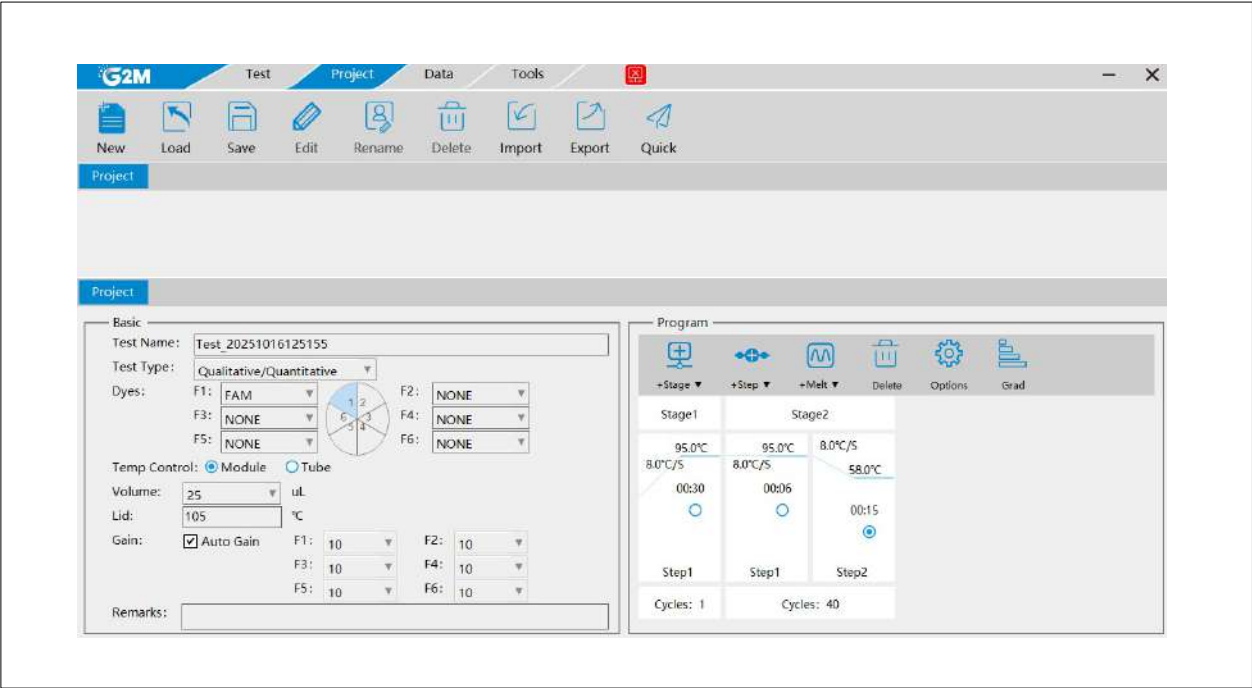


Allelic Discrimination Plot
Allelic discrimination plot for SNP genotyping and sample classification

Designed for simplicity and performance

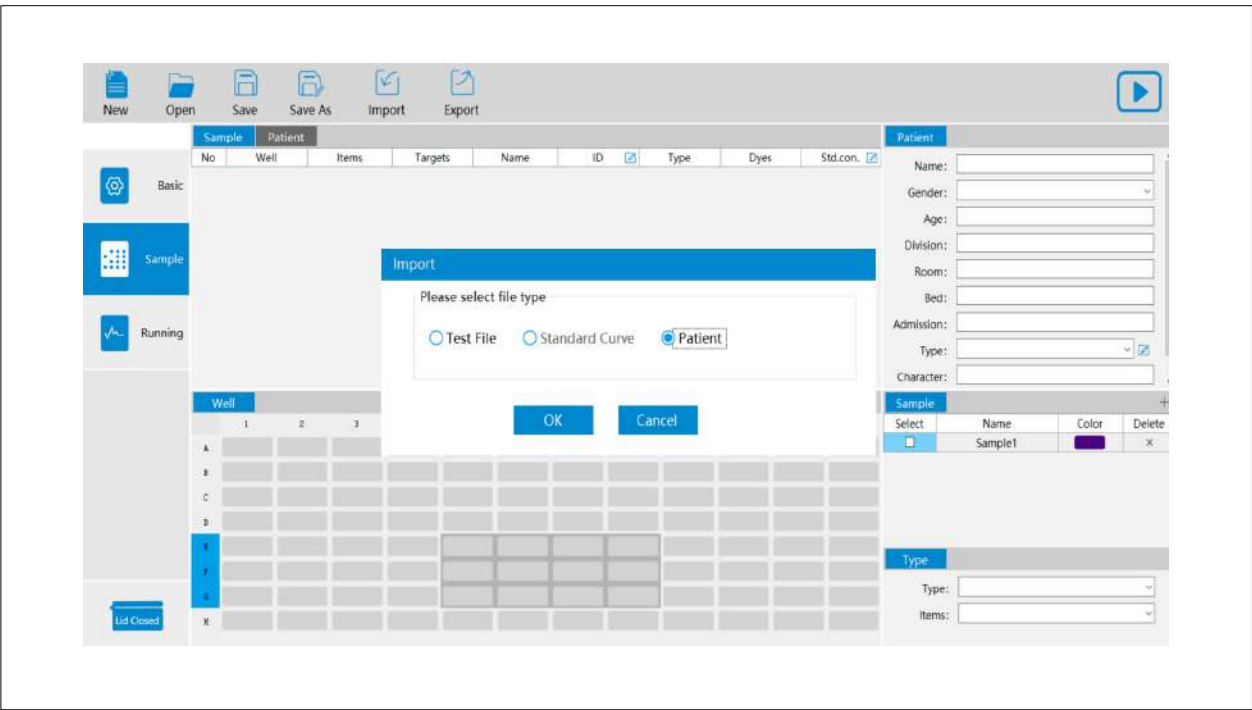
User Friendly Run Setup

RapiCycler-96 touchscreen software combines powerful analytical capabilities with an intuitive, user-friendly interface, enabling effortless assay setup, monitoring, and data interpretation even for complex workflows.



One-Click Patient Data Import

When handling large amounts of sample information, this function allows one-click import of .xls files. The software then automatically populates all patient information.



Specifications		
Model No.	G2MRAP14001	G2MRAP14002
Sample Capacity	96 well, 12*8 strip, 96*0.2ml single tube	
Consumable	0.2ml tube, 0.2ml 8-tube strips, 0.2ml 96 well plate	
Reaction Volume	10-100µl	
Temperature Range	4-100°C(Resolution:0.1°C)	
Ramp Rate	upto 8.0°C/s	
Temperature Control Accuracy	±0.1°C	
Uniformity	±0.2°C	
Accuracy	±0.1°C	
Gradient	0.1-42°C	
Hot Lid Temperature	30-110°C(Adjustable, default 105°C)	
Hotlid opening mode	Automatic cover opening	
Temperature Control	Block/Tube	
Excitation Wavelength	400nm - 710nm	
Emission Wavelength	500nm - 810nm	
Detection Channel	4 channel	6 channel
Factory Calibrated Dyes	F1: FAM/SYBR-Green/EVA-Green F2: HEX/VIC/JOE/TET/YELLOW/NED F3: ROX/Texas Red F4: Cy5 / Quasar 670	F1: FAM/SYBR-Green/EVA-Green F2: HEX/VIC/JOE/TET/YELLOW/NIC F3: ROX/Texas Red F4: Cy5 / Quasar 670 F5: Cy5.5 / Quasar 705 F6: CY3/NED/TAMRA
Excitation	Long life LED	
Detection	High sensitivity photoelectric detector	
Dynamic Range	1-10 ¹⁰ Copies	
Sensitivity	1 copy	
Feature function	Qualitative/absolute quantification, relative quantitative, genotyping, HRM, melting curve, multiplex PCR, standard curve, relative standard curve, comparative Ct, allele identification/SNP genotyping, temperature gradient function, dissociation curve analysis, pathogen detection, plus/minus assays etc.	
Special Temperature Setting Function	Supports thermal gradient PCR, Long PCR, Touch Down PCR	
Control mode	12.1 inch adjustable colour touch screen control or PC control	
Date Export Formats	excel, csv, txt, pdf	
Reporting	Automated report generation at the end of the run, ready for printing	
Communication Parts	USB2.0, RS232	
Operating System for PC	Win7, Win 10	
Dimension	520x350x330mm(L x W x H)	
Net Weight	30.0KG	
Power Supply & Consumption	AC 100-240V, 50-60Hz; 1500W	
Powerful software	Pre-calibrated with optimized algorithms to calculate crosstalk coefficients, ensuring minimal interference from overlapping fluorescence dyes accurate detection	
Data collection	Synchronous multi-channel detection with side-scan technology captures fluorescence data for 96 samples in 5 seconds. All channels are collected by default, with post-run reconfiguration and reanalysis available	

State-of-the-Art 150,000 Sq. Ft. Fully Automated
Manufacturing Facility in Manesar, India



Genes2Me Pvt. Ltd.

1105, 11th Floor, Tower B, SAS Tower, Medicity,
Sector - 38, Gurgaon - 122 001, Haryana, India
Tel : + 91 18001 214030 / + 91 88000 23600
E-mail : contact@genes2me.com
www.genes2me.com

